

Magnetic conveyor TM



Design

The Magnetic Conveyor Type TM conveys fine ferrous swarf and particles with a minimum of maintenance, while separating the particles from coolant.

- Low maintenance as the swarf or parts are conveyed on the upper side of the stainless sheet and are not into contact with the chains.
- Safe as all moving parts are totally enclosed

Function

Suitable for fine ferrous swarf and particles, such as short steel and iron cast chips. The Magnetic conveyor may also be used as a coarse coolant filter.

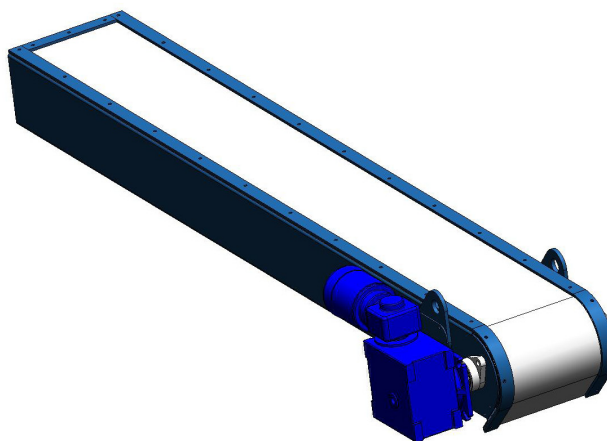
A number of strong permanent magnets are carried by two endless chains against the underside of this stainless skin and the swarf or parts are conveyed by the magnetic fields.

Technical data

Available in angles of 30°, 45° or 60°

Widths available: 276 mm, 400 mm.

Chains are automatically oil lubricated within the frame.



Material	Steel					Cast iron	
Swarf type:	Grinding swarf	Short	Middle	Long	Bushy	Short	Middle
Suitable:	No	Yes	Yes	No	No	Yes	Yes