

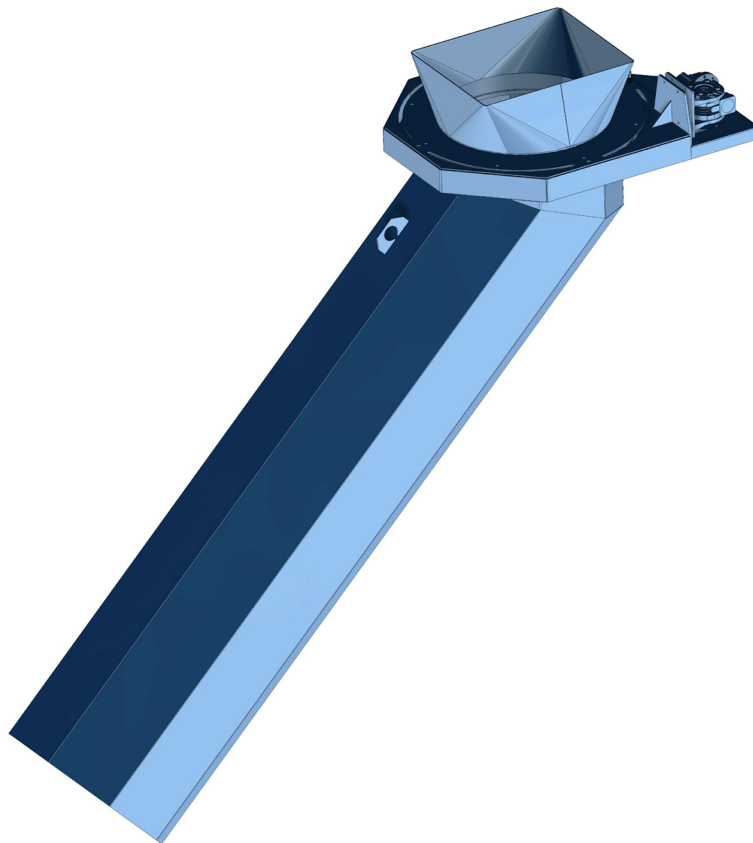
# **Nederman**

Instruction manual

## **Chip & swarf management system**

## **Swivel chute**

RSR



### **Original instruction manual**

EN INSTRUCTION MANUAL

### **Translation of original instruction manual**

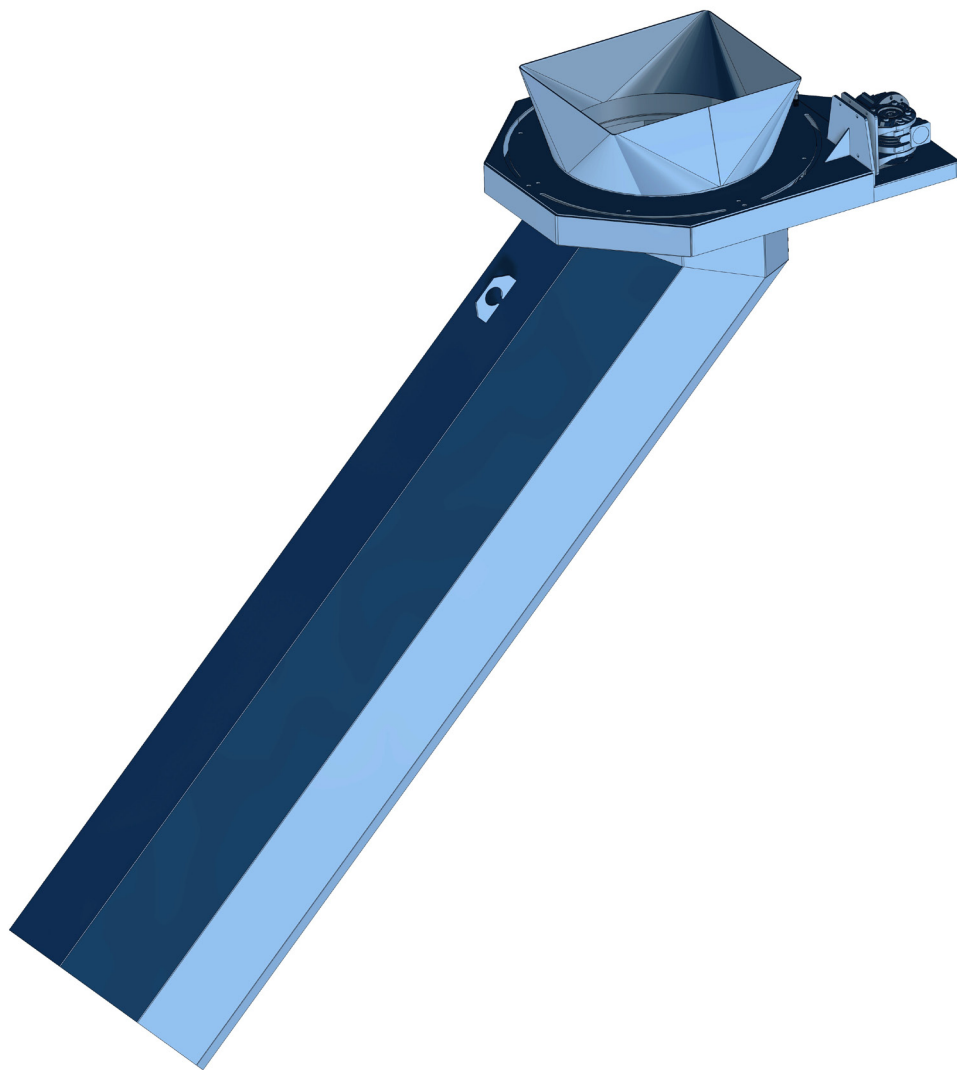
DA BETJENINGSVEJLEDNING  
DE BEDIENUNGSANLEITUNG  
ES MANUAL DE INSTRUCCIONES  
PL INSTRUKCJA UŻYTKOWANIA  
SV ANVÄNDARMANUAL



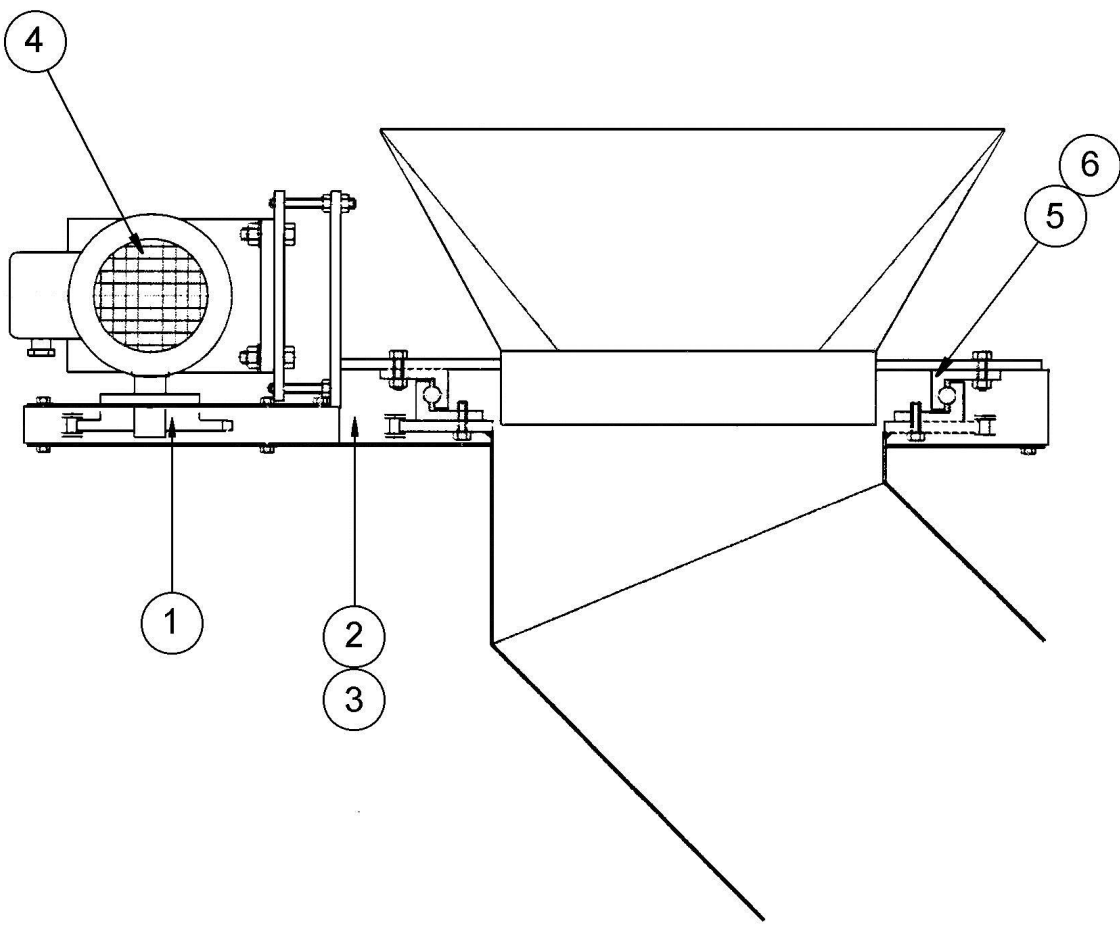
<b>Figures .....</b>	<b>4</b>
<b>English .....</b>	<b>7</b>

# Figures

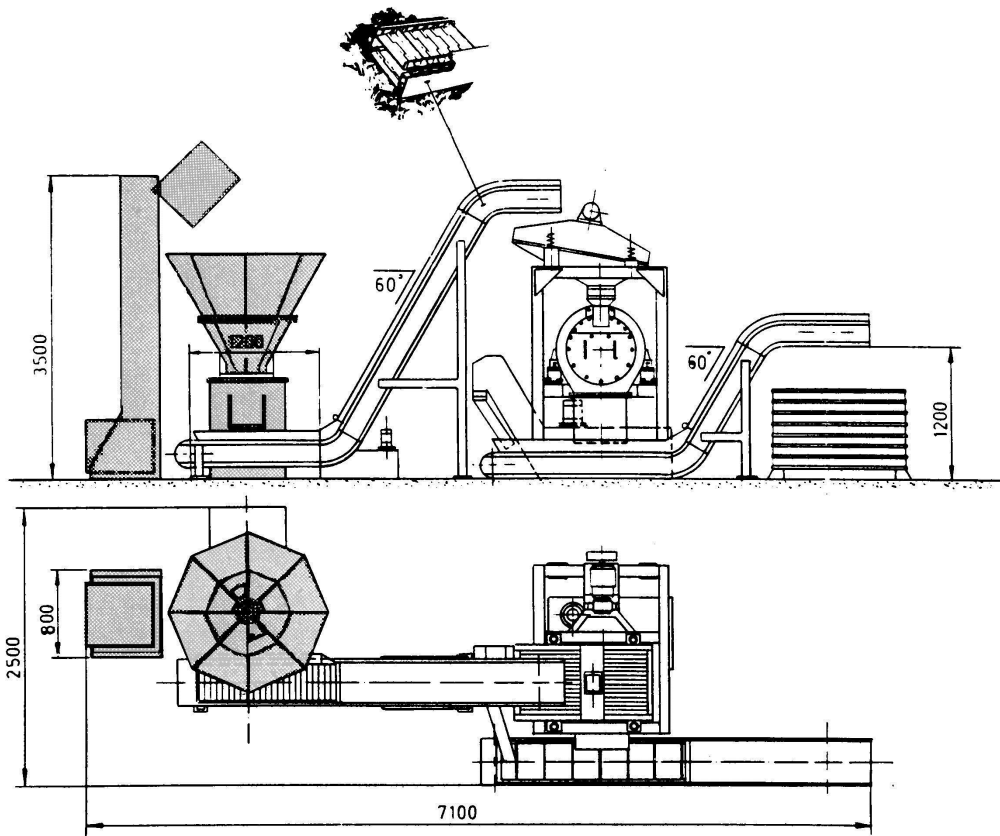
1



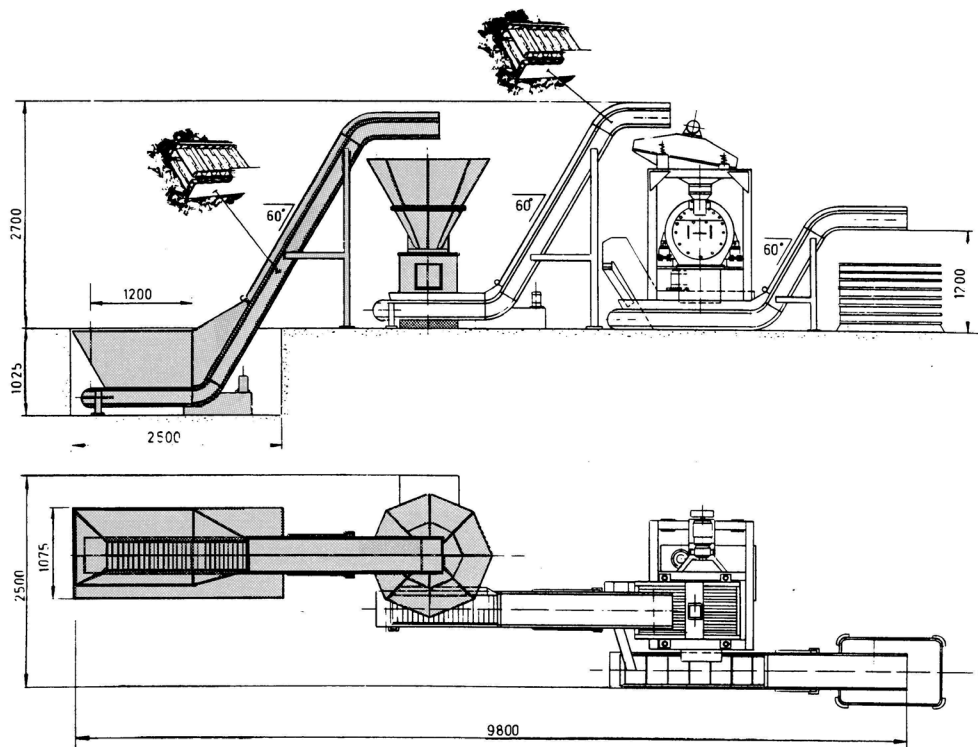
2



3



4



English

Instruction manual

Chip &amp; swarf management system

Swivel chute

RSR

**Table of contents**

Figures.....	4
1 Declaration of conformity.....	9
2 Preface.....	10
2.1 Foreword.....	10
3 Notices on hazards.....	11
4 Safety.....	11
5 Description.....	11
5.1 Function.....	11
5.2 Technical data.....	11
6 Main components.....	11
7 Before installation.....	12
7.1 Delivery checks.....	12
7.2 Installation requirements.....	12
8 Installation.....	12
8.1 Installing the swivel chute.....	12
9 Using the swivel chute.....	12
9.1 Before start-up.....	12
9.2 Operation.....	12
10 Maintenance.....	12
10.1 Maintenance instruction.....	13
10.2 Lubrication.....	13
10.3 Spare parts.....	13
11 Recycling.....	13
12 Troubleshooting.....	14
13 Acronyms and abbreviations.....	14



# 1 Declaration of conformity

*Below is presented the document setting out the contents of the EC Declaration of Conformity, not including the serial number and the signature of the person empowered. The formal Declaration is attached to your **RSR Swivel chute**.*

## 1. DECLARATION OF INCORPORATION OF PARTLY COMPLETED MACHINERY

We,

**NEDERMAN Manufacturing Poland Sp. z o. o.**

ul. Okólna 45 A

05-270 Marki, PL

herewith declare that

the machine: **Swivel chute**

type: **RSR**

serial number:

year of manufact.:

is in conformity with the provisions of the Directive **2006/42/EC** with exclusion of point **1.3.7 Annex I** until correctly installed according to the manual.

Proper technical documentation for the above mentioned machine has been prepared according to Annex VII part B. Technical Dpt. Manager at NEDERMAN Manufacturing Poland Sp. z o. o. is responsible for this documentation.

The product is also in conformity with other following directives:

Low Voltage Directive **2006/95/EC**,

Electromagnetic Compatibility Directive **2004/108/EC**,

and complies with harmonized standards relating to EC Directives:

**EN ISO 12100-1, EN ISO 12100-2, EN 60204-1**

NEDERMAN Manufacturing Poland Sp. z o. o. furthermore declares that the partly completed machinery must not be put into service until the final machinery into which it is to be incorporated has been declared in conformity with the provisions of the Directive 2006/42/EC.

*The identity and signature of the person empowered to draw up the declaration*

Marki, *date*

## 2 Preface

This manual is for the correct installation, use and maintenance of this product. Read it carefully before using this product or carrying out maintenance. Replace the manual immediately if lost.

This product has been designed to meet the requirements of relevant EC directives. To maintain this status, all installation, repair and maintenance work for this product is to be carried out by qualified personnel using only original spare parts. Contact the nearest authorized distributor or NEDERMAN for advice on technical service and obtaining spare parts. Also read Chapter '4 Safety' thoroughly.

NEDERMAN continuously improves its products design and efficiency through modifications, and reserves the right to do so without introducing these improvements to previously supplied products. NEDERMAN also reserve the right to, without previous notice, modify data and equipment as well as operating and maintenance instructions.

### 2.1 Foreword

Your RSR Swivel chute has been manufactured by:

**NEDERMAN Manufacturing Poland Sp. z o. o.**

ul. Okólna 45 A

05-270 Marki, Poland

Tel: +48 22 7616000

Fax: +48 22 7616099

E-mail: [info@nederman.pl](mailto:info@nederman.pl)

[www.nederman.com.pl](http://www.nederman.com.pl)

NEDERMAN Swivel chutes guarantee good design, quality components and skilled labour plus years of experience in swarf handling and swarf crushing. All these abilities have been used to design a product with high reliability and long service life. We are convinced that your experiences will confirm your choice of NEDERMAN Swivel chutes.

Length of life and reliability can, as with any machine tool, be prolonged with correct installation and correct maintenance. It pays off to follow our advice for maintenance.

This manual consists of instructions and spare parts list for your new NEDERMAN Swivel chute. It also contains greasing instructions, exploded view or assembly drawing and a simple schedule for trouble-shooting.

NEDERMAN Swivel chutes are normally used in all swarf handling systems which NEDERMAN designs, sells and installs as well as in similar machine tools available on the market.

All swivel chutes which leave our works are checked and do not need any additional maintenance other than stated in this manual.

For orders of spare parts and if you want to contact our engineers please find our phone number and address at the beginning of this chapter.

## 3 Notices on hazards

This document contains important information that is presented either as a warning, caution or note. See the following examples:



### **WARNING! Type of injury.**

Warnings indicate a potential hazard to the health and safety of personnel, and how that hazard may be avoided.

### **CAUTION! Type of risk.**

Cautions indicate a potential hazard to the product but not to personnel, and how that hazard may be avoided.

**NOTE!** Notes contain other information that is important for personnel.

## 4 Safety

This chapter contains important information that refer to a potential hazard to the health and safety of personnel, and how that hazard may be avoided.

### **Safety regulations:**

- Electrical installations have to be done by qualified personnel only.
- At connection of voltage feed as well as at service and maintenance work on the swivel chute the circuit breaker must be off.
- The swivel chute must not be operated with the covers removed.
- Protective goggles must be used for work around the swivel chute.
- The data sheet from the coolant supplier must be studied as parts from coolant can cause allergic reactions.



### **WARNING! Risk of injury.**

The floor around the conveyor might get slippery from coolant getting outside the machine.

## 5 Description

### 5.1 Function

NEDERMAN Swivel chutes are components included in swarf handling systems and are used for discharging of swarf from e.g. conveyors.

### 5.2 Technical data

Contact your nearest authorized distributor or local NEDERMAN representative for advice on technical details and application.

## 6 Main components

**REMARK.** We continuously improve our products and their efficiency through the introduction of design modifications. We reserve the right to do this without introducing these improvements on previously supplied products. We also reserve the right, without previous notice, to modify data and equipment, as well as operating and maintenance instructions.

## 7 Before installation

### 7.1 Delivery checks

Check the unit for any transport damage. In case of damage or parts missing, notify the carrier and your local NEDERMAN representative immediately.

### 7.2 Installation requirements

No specific foundation is required.

## 8 Installation

### 8.1 Installing the swivel chute

NEDERMAN Swivel chutes can be installed in all swarf handling systems which NEDERMAN designs, sells and installs, as well as in similar machine tools available on the market.

**NOTE.** As the RSR Swivel chute is a partly completed machinery, it must not be put into service until the final machinery into which it is to be incorporated has been declared in conformity with the provisions of the Directive 2006/42/EC.

## 9 Using the swivel chute

### 9.1 Before start-up

**WARNING:** Before any kind of activity, the SAFETY REGULATIONS (Chapter 4) must be read carefully, and the safety regulations must be strictly adhered to.

### 9.2 Operation

The operator should always be aware of the normal power consumption of the motor, normal outflow of separated material and the level of vibration. By considering the above mentioned factors and observing modifications one can be sure that the swivel chute will function properly.

## 10 Maintenance

Read Chapter '4 Safety' before carrying out maintenance.

Installation, repair and maintenance work is to be carried out by qualified personnel using only original NEDERMAN spare parts. Contact your nearest authorized distributor or NEDERMAN for advice on technical service.

**NOTE!** The service intervals in this chapter are based on the unit being professionally maintained.

## 10.1 Maintenance instruction

NEDERMAN Swivel chute is very robust in design but should like every other production machine be regularly checked and maintained.

Daily checks should be made at the start of operations until a permanent maintenance schedule can be established. When this has been done only routine checks and general observations are necessary.

## 10.2 Lubrication

### Swivel bearing

The swivel bearing should be lubricated with grease. Use ball bearing grease of good quality.

Greasing interval: every 6th month at one-shift operation, 50 g grease per swivel bearing.

### Chain

Greasing interval: every 6th months at one-shift operation.

## 10.3 Spare parts

Contact your nearest authorized distributor or NEDERMAN for advice on technical service or if you require help with spare parts. See also [www.nederman.com.pl](http://www.nederman.com.pl)

### Ordering spare parts

When ordering spare parts always state the following:

- Product serial number and NEDERMAN reference number (see the product identification plate).
- Article number and designation - see Table 10-1.
- Quantity of the parts required.

Table 10-1: Spare parts specification - see Fig. 2

Pos.	Article No.	Designation	Qty	Unit
1	97022009	Chain wheel	1	pce
2	9702116	Roller chain	1	pce
3	9702117	Chain link	1	pce
4	960401	Motor/gear	1	pce
5	902205	Swivel bearing - 330 mm	1	pce
6	970127	Swivel bearing - 500 mm	1	pce

## 11 Recycling

The product has been designed for component materials to be recycled. Its different material types must be handled according to relevant local regulations. Contact the distributor or NEDERMAN if uncertainties arise when scrapping the product at the end of its service life.

## 12 Troubleshooting

This trouble-shooting schedule only serves as a guide to probable reasons for faults. As mentioned earlier correct maintenance is the best insurance against the development of defects.

Table 12-1: Trouble shooting guide

Problem	Possible cause	Solution
The swivel chute does not start.	Electrical fault.	Check the fuses and torque limiters.
The motor starts but the swivel chute stands still.	The chain is broken.	Exchange the chain.
The bearings run heavily.	Bad greasing.	Look in this manual for greasing instructions.

## 13 Acronyms and abbreviations

NEDERMAN Manufacturing Poland Sp. z o. o.

ul. Okólna 45 A

05-270 Marki, Poland

Tel: +48 22 7616000

Fax: +48 22 7616099

E-mail: [info@nederman.pl](mailto:info@nederman.pl)

[www.nederman.com.pl](http://www.nederman.com.pl)

