

# ARBOGA - DARENTH

## OPERATING INSTRUCTIONS

### SWIVEL CHUTE

### TYPE RSR

**Customer:**.....

**Order No.:**.....

**Manufacturing No.:**.....

**Delivery date:**.....

---

## ARBOGA-DARENTH AB

Box 1022, SE-732 27 ARBOGA, Sweden, Tel +(46) 589 - 610200, Fax +(46) 589 - 610210

E-mail: info@arbogadarenth.se

## Contents

---

Foreword .....	2
Guarantee .....	3
Saftey regulations .....	4
Swivel chute - Figure 1 .....	5
Greasing .....	5
Spare parts .....	6
Drawing with pos.nos. - Figure 2.....	6
Trouble-shooting .....	7
Examples of erection .....	8

## Foreword

ARBOGA-DARENTH Swivel chutes are components included in swarf handling systems and are used for discharging of swarf from e.g. conveyors.

ARBOGA-DARENTH Swivel chutes guarantees good design, quality components, quality components and skilled labour plus years of experience in swarf handling and swarf crushing. All these abilities have been used to design a product with high reliability and long service life.

Length of life and reliability can, as with any machine tool, be prolonged with correct installation and correct maintenance. It pays off to follow our advice for maintenance.

This maintenance manual consists of instructions for your new ARBOGA-DARENTH Swivel chute. It also contains greasing instructions, spare parts list and a simple schedule for troubleshooting.

ARBOGA-DARENTH Swivel chutes are normally used in swarf handling systems which we design, sell and install.

All Swivel chutes, which leave our works, are checked and do not need any additional maintenance other than stated in this manual.

For orders of spare parts and if you want to contact our engineers please find our phone number and address at the front page of this instruction.

## Guarantee

All products from ARBOGA-DARENTH are guaranteed free from any fault in material and labour during a period of one year. One year consists of 365 calendar days or 1800 hours which ever occurs first. The guarantee period for our products starts the day the equipment is sent to the client and continues during one year as earlier described. This is due if our maintenance and control recommendations are followed.

The guarantee is not valid for incorrect erection, misuse, incorrect maintenance or if maintenance is not made due to our recommendations and accepted industry practice.

During the guarantee period and after written notice to us, we guarantee that all parts manufactured in our plant which are faulty regarding material or labour shall be replaced. We give no further guarantee either written or verbal for costs except material and man labour.

### **This guarantee or other guarantees from us do not cover:**

1. Damage after the guarantee period is ended.
2. Damage caused by chemical reactions or wear due to the detail has been submitted to external influences.
3. Equipment damaged at delivery or by accidents.
4. Damage through misuse, incorrect use or feeding of the centrifuge or if recommended maintenance is not followed.
5. Damage to equipment which have been repaired or changed by others than by the one who has been acknowledged as our sole representative.
6. Wear parts.

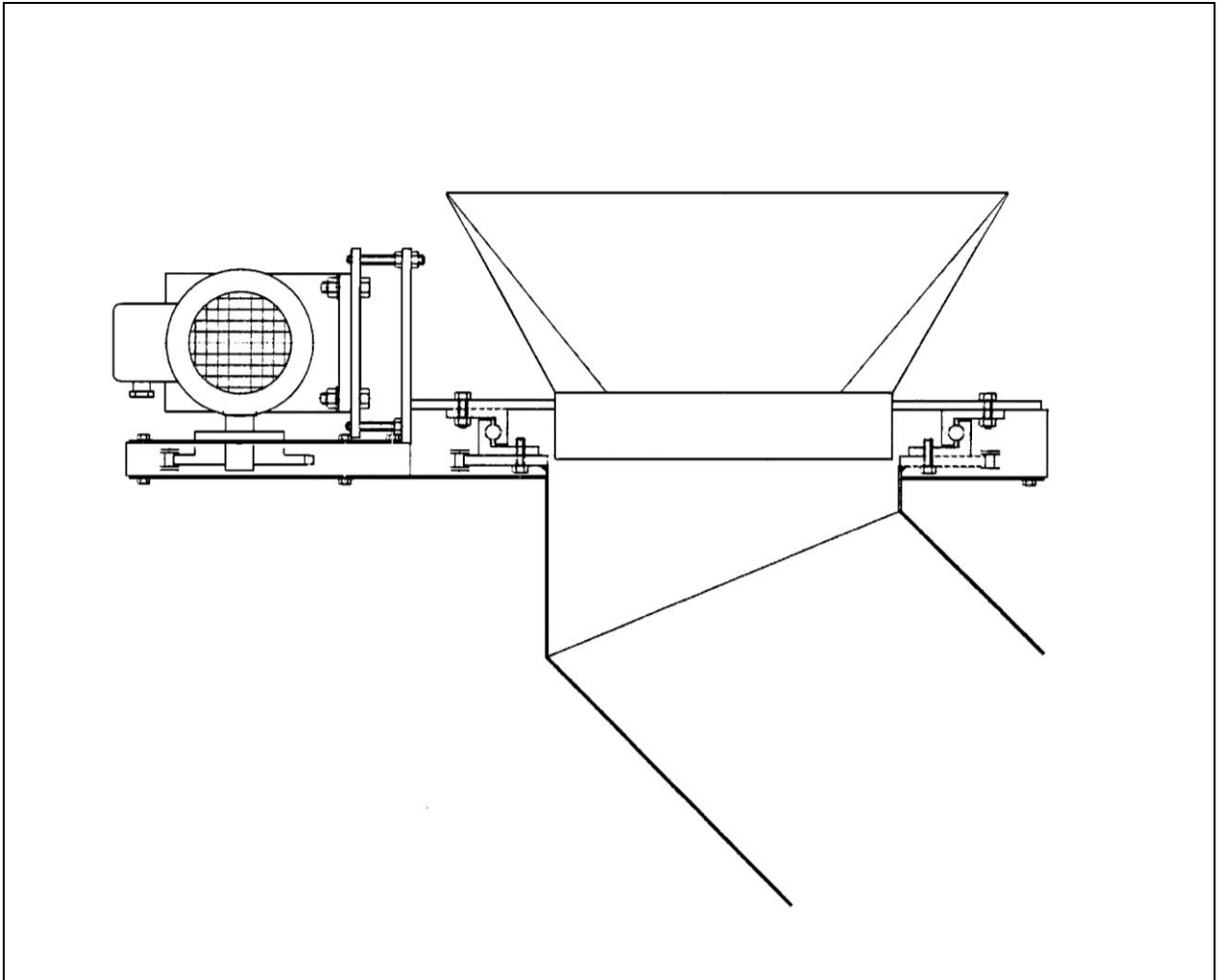
## **Safety regulations**

- Electrical installations have to be done by qualified personnel only.
- At connection of voltage feed as well as at service and maintenance work on the Swivel chute the circuit breaker must be off.
- The Swivel chute must not be operated with the covers removed.
- Protective goggles must be used for work around the Swivel chute.
- The data sheet from the coolant supplier must be studied as parts from coolant can cause allergic reactions.

### **WARNING!**

The floor around the swarf handling system might get slippery from coolant.

## Swivel chute



*Figure 1*

### **Greasing**

#### **Swivel bearing**

The swivel bearing should be lubricated with grease. Use ball bearing grease of good quality.  
Greasing interval: every 6th month at 1-shift operation, 50 g grease per swivel bearing.

#### **Chain**

Greasing interval: every 6th months at 1-shift operation.

## Spare parts

**NB!** When ordering spare parts, please specify the following data:

- Type
- Designation
- Serial number
- Article number

Pos	Article No.	Designation	Qty	Unit
1	97022009	Chain wheel	1	pce
2	9702116	Roller chain	1	pce
3	9702117	Chain link	1	pce
4	960401	Motor/gear	1	pce
5	902205	Swivel bearing $\varnothing$ 330 mm	1	pce
6	970127	Swivel bearing $\varnothing$ 500 mm	1	pce

## Drawing with pos.nos.

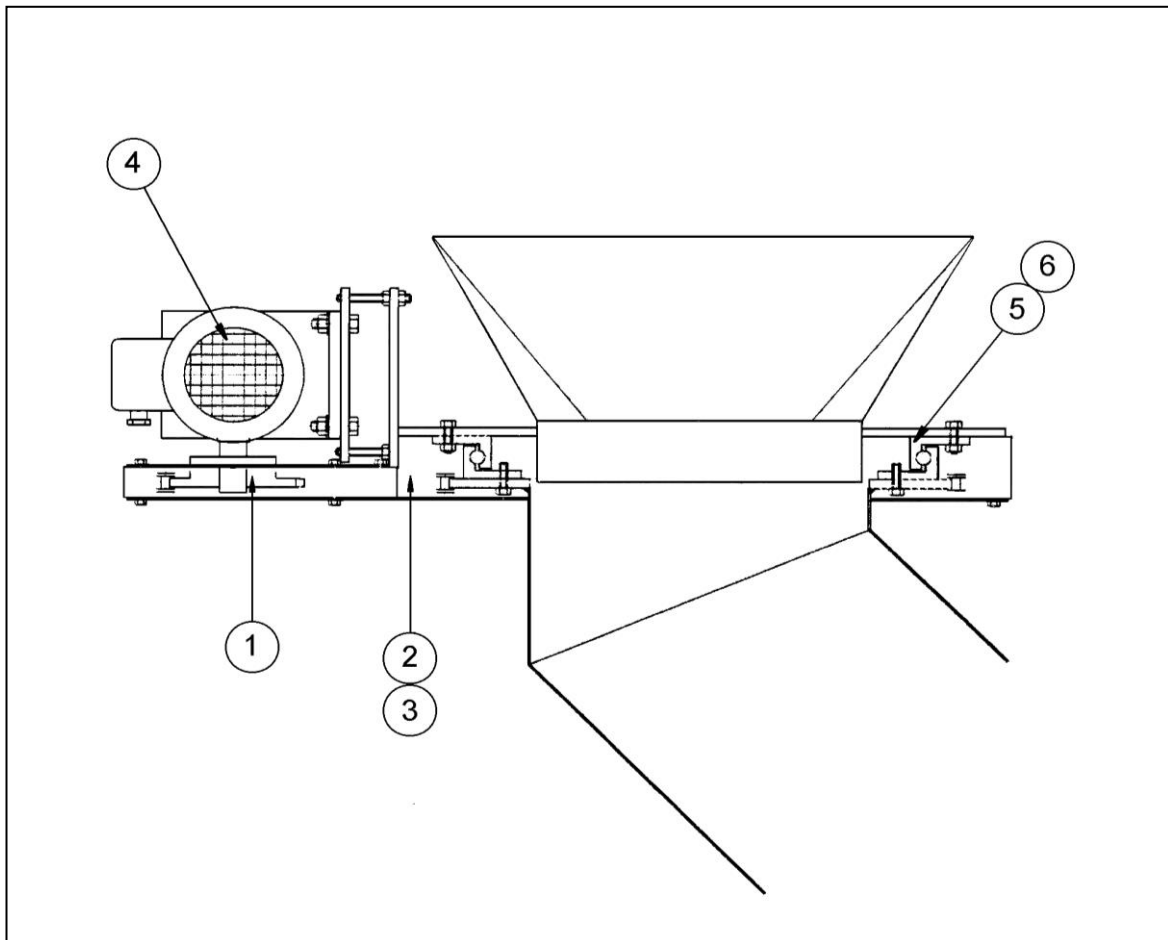


Figure 2

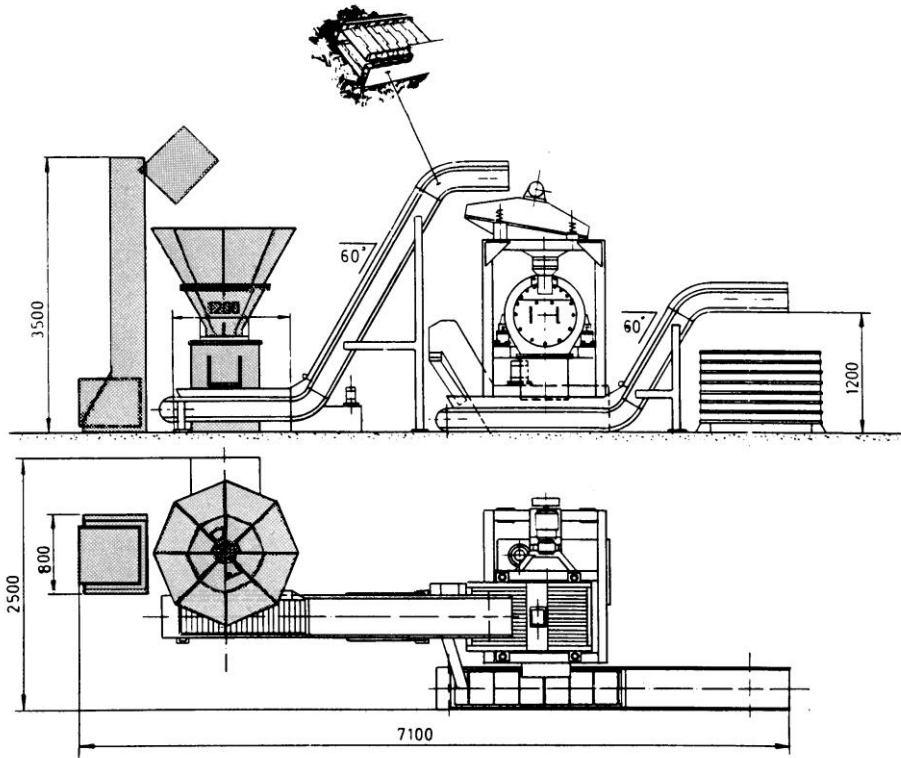
Fig

## Trouble-shooting

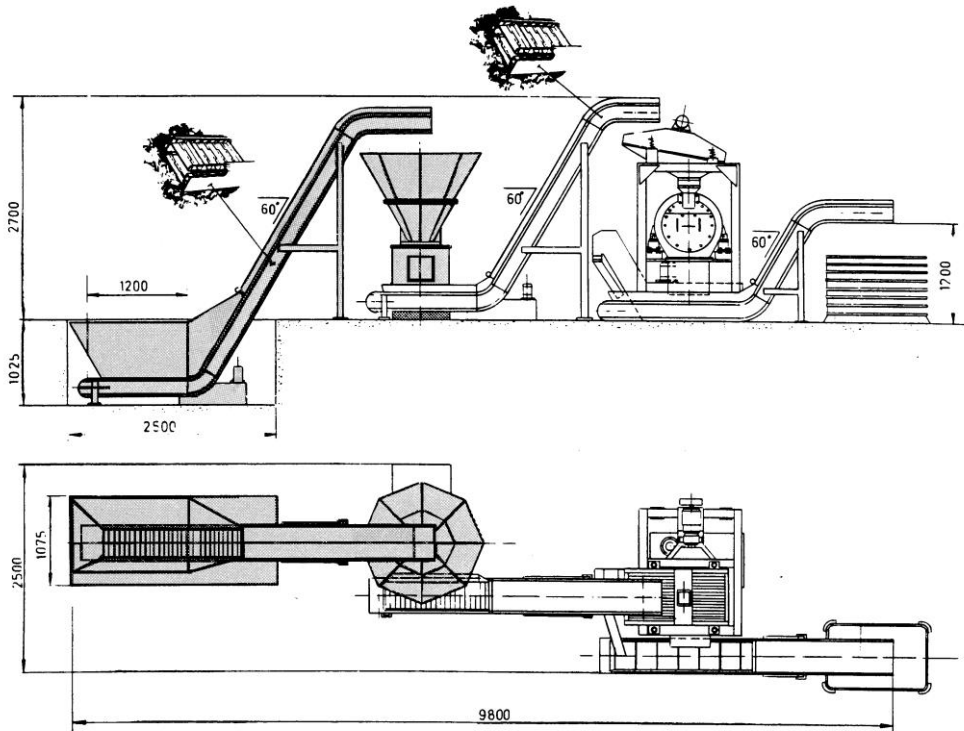
This trouble-shooting schedule only serves as a guide to probable reasons for faults. As mentioned earlier correct maintenance is the best insurance against the development of defects.

<b>Problem</b>	<b>Symptom</b>	<b>Action</b>
The swivel chute does not start.	Electrical fault.	Check the fuses and torque limiters.
The motor starts but the swivel chute stands still.	The chain is broken.	Exchange the chain.
The bearings run heavily.	Bad greasing.	Look in this manual for greasing instructions.

### Example of erection



### Skip hoist feeding



### Conveyor feeding