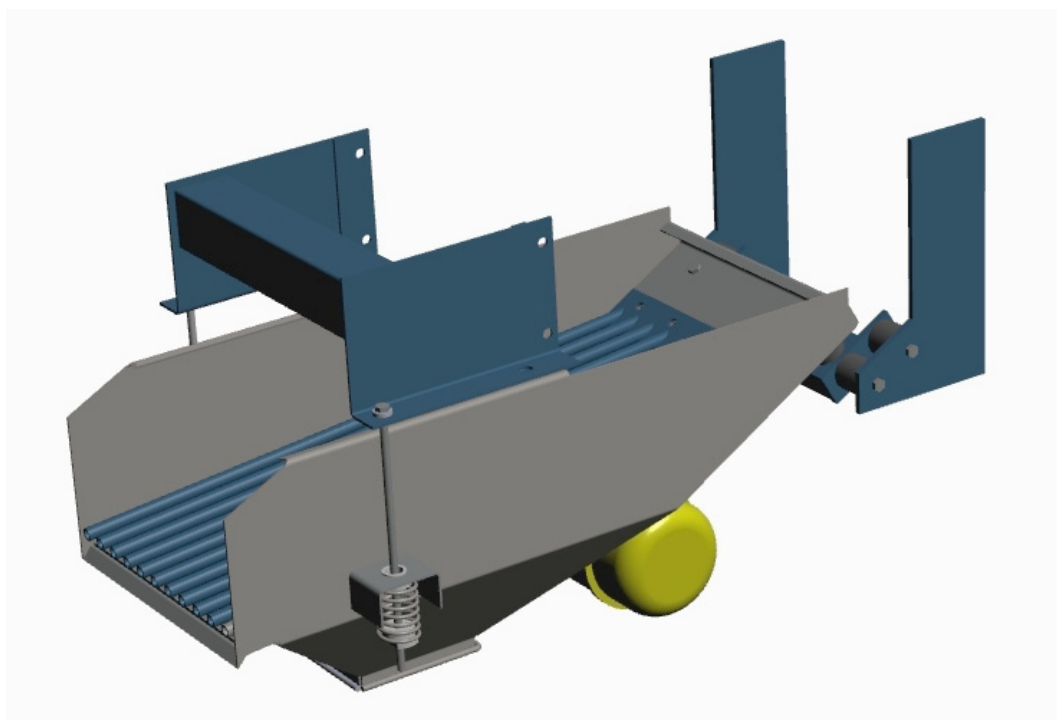


Chip & swarf management system

Bar end separator

SB



Original instruction manual

EN INSTRUCTION MANUAL

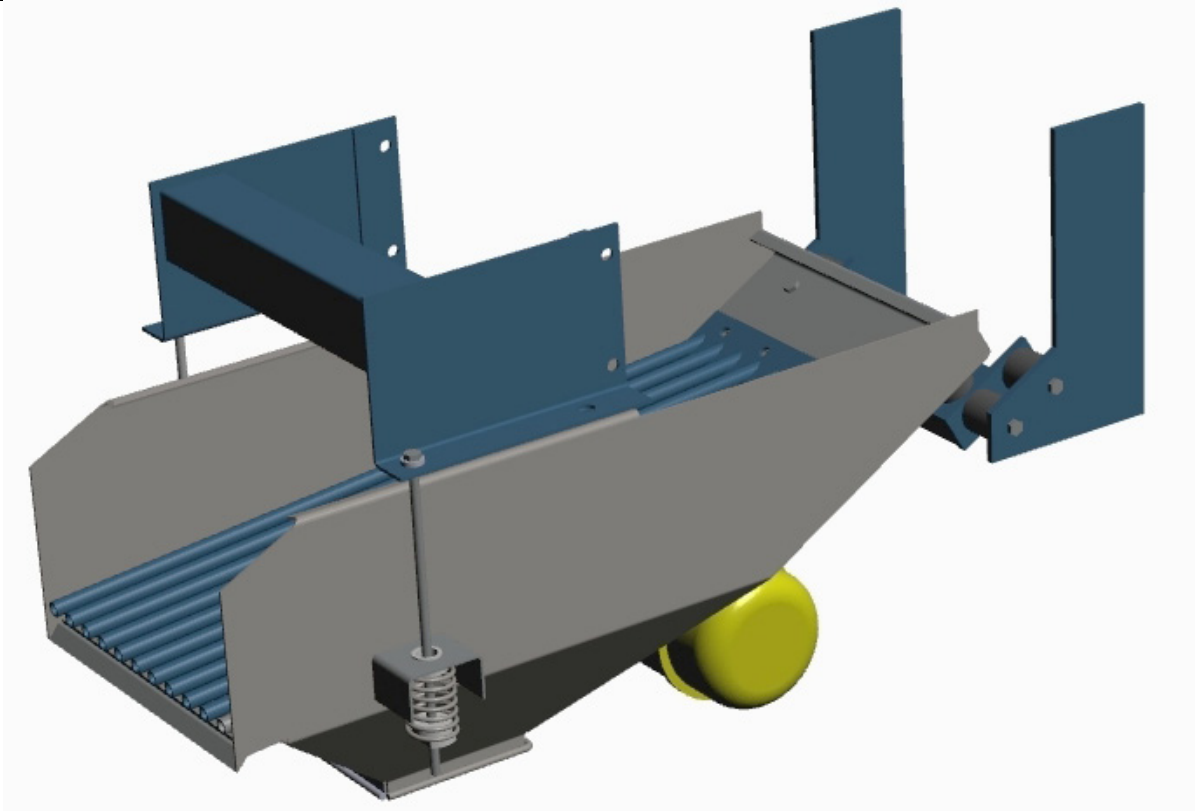
Translation of original instruction manual

DA BETJENINGSVEJLEDNING
DE BEDIENUNGSANLEITUNG
ES MANUAL DE INSTRUCCIONES
PL INSTRUKCJA UŻYTKOWANIA
SV ANVÄNDARMANUA

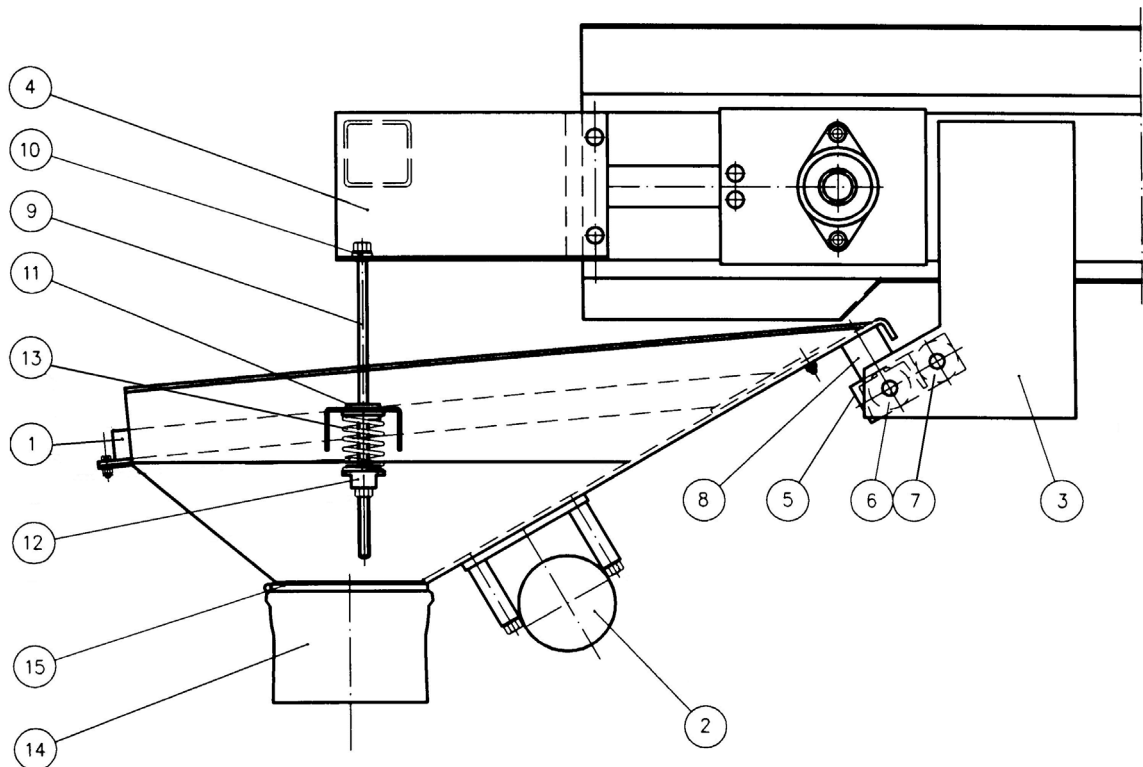
Figures	4
English	7

Figures

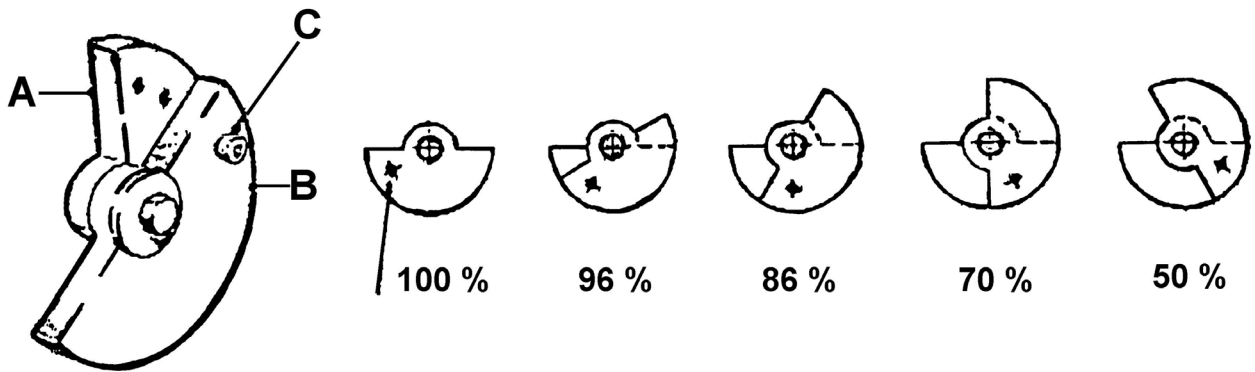
1



2



3



4

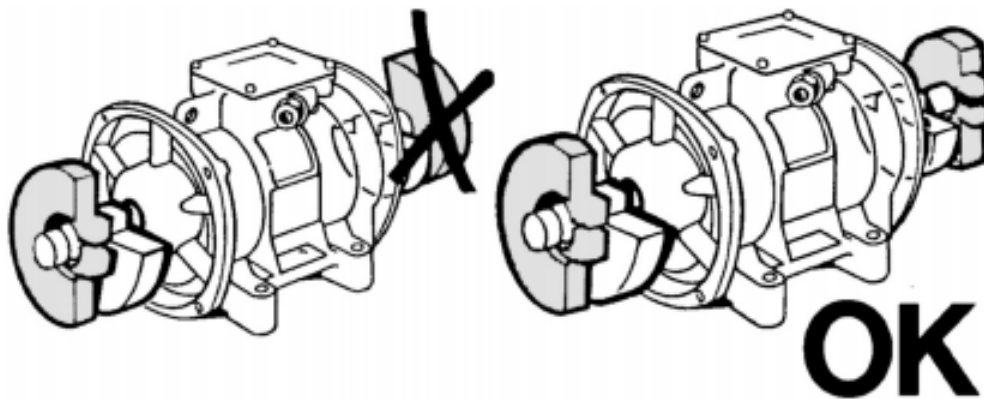


Table of contents

Figures.....	4
1 Declaration of conformity.....	9
2 Preface.....	10
2.1 Foreword.....	10
3 Notices on hazards.....	11
4 Safety.....	11
5 Description.....	11
5.1 Function.....	11
5.2 Technical data.....	12
6 Main components.....	12
7 Before installation.....	12
7.1 Delivery checks.....	12
7.2 Installation requirements.....	12
8 Installation.....	12
8.1 Installing the bar end separator.....	12
9 Using the bar end separator.....	12
9.1 Before start-up.....	12
9.2 Operation.....	12
10 Maintenance.....	13
10.1 Maintenance instruction.....	13
10.2 Lubrication.....	13
10.3 Spare parts.....	14
11 Recycling.....	14
12 Troubleshooting.....	14
13 Acronyms and abbreviations.....	15

1 Declaration of conformity

Below is presented the document setting out the contents of the EC Declaration of Conformity, not including the serial number and the signature of the person empowered. The formal Declaration is attached to your device.

1. DECLARATION OF INCORPORATION OF PARTLY COMPLETED MACHINERY

We,

Nederman Manufacturing Poland Sp. z o. o.

ul. Okólna 45 A

05-270 Marki, PL

herewith declare that

the machine:

Bar end separator

type:

SB

serial number:

year of manufact.:

is in conformity with the provisions of the Directive **2006/42/EC** with exclusion of point **1.3.7 Annex I** until correctly installed according to the manual.

Proper technical documentation for the above mentioned machine has been prepared according to Annex VII part B. Technical Dpt. Manager at NEDERMAN Manufacturing Poland Sp. z o. o. is responsible for this documentation.

The product is also in conformity with other following directives:

Low Voltage Directive **2006/95/EC**,

Electromagnetic Compatibility Directive **2004/108/EC**,

and complies with harmonized standards relating to EC Directives:

EN ISO 12100, EN 60204-1

NEDERMAN Manufacturing Poland Sp. z o. o. furthermore declares that the partly completed machinery must not be put into service until the final machinery into which it is to be incorporated has been declared in conformity with the provisions of the Directive 2006/42/EC.

The identity and signature of the person empowered to draw up the declaration

Marki, *date*

2 Preface

This manual is for the correct installation, use and maintenance of this product. Read it carefully before using this product or carrying out maintenance. Replace the manual immediately if lost.

This product has been designed to meet the requirements of relevant EC directives. To maintain this status, all installation, repair and maintenance work for this product is to be carried out by qualified personnel using only original spare parts. Contact the nearest authorized distributor or NEDERMAN for advice on technical service and obtaining spare parts.

NOTE! Read Chapter '4 Safety' thoroughly.

NEDERMAN continuously improves its products design and efficiency through modifications, and reserves the right to do so without introducing these improvements to previously supplied products. NEDERMAN also reserve the right to, without previous notice, modify data and equipment as well as operating and maintenance instructions.

2.1 Foreword

Your SB Bar end separator has been manufactured by:

NEDERMAN Manufacturing Poland Sp. z o. o.

ul. Okólna 45 A

05-270 Marki, Poland

Tel: +48 22 7616000

Fax: +48 22 7616099

www.nederman.com

NEDERMAN Bar end separators guarantee good design, quality components and skilled labour plus years of experience in chips handling and chips crushing. All these abilities have been used to design a product with high reliability and long service life. We are convinced that your experiences will confirm your choice of NEDERMAN Bar end separators.

Length of life and reliability can, as with any machine tool, be prolonged with correct installation and correct maintenance. It pays off to follow our advice for maintenance.

This maintenance manual consists of instructions and spare parts list for your new NEDERMAN Bar end separator. It also contains greasing instructions, exploded view and a simple schedule for trouble-shooting.

NEDERMAN Bar end separators are normally used in all chips handling systems which NEDERMAN designs, sells and installs as well as in similar machine tools available on the market.

All bar end separators which leave our works are checked and do not need any additional maintenance other than stated in this manual.

For orders of spare parts and if you want to contact our engineers please find our phone number and address at the beginning of this chapter.

3 Notices on hazards

This document contains important information that is presented either as a warning, caution or note. See the following examples:



WARNING! Type of injury.

Warnings indicate a potential hazard to the health and safety of personnel, and how that hazard may be avoided.

CAUTION! Type of risk.

Cautions indicate a potential hazard to the product but not to personnel, and how that hazard may be avoided.

NOTE! Notes contain other information that is important for personnel.

4 Safety

This chapter contains important information that refer to a potential hazard to the health and safety of personnel, and how that hazard may be avoided.

Safety regulations:

- Electrical installations have to be done by qualified personnel only.
- At connection of voltage feed as well as at service and maintenance work on the device the circuit breaker must be off and locked.
- Test the emergency stop at installation and always when maintenance and service have been done.
- The device must not be operated with the covers removed.
- Information included in the data sheet from the supplier of the coolant must be known, because coolant may cause allergic reactions.



WARNING! Risk of slipping.

The floor around the device might get slippery from coolant getting outside the machine.

5 Description

The bar end separator is mounted under the outlet of the conveyor. It is used to separate of short chips from bushy chips and larger pieces (bar ends), providing separate chips to other devices (mainly crushers) or containers.

5.1 Function

The motor oscillates the screen so that bushy chips and bar ends are separated out for preventing damage to the centrifuge.

The short chips is discharged through the screen and falls down into the centrifuge.

The vibration strength and the inclination are to be adjusted depending on chips type.

5.2 Technical data

The vibration motor is rated: ~3 / 400V / 50 Hz , **170 W**.
Motor weight is **10.7 kG**.

For help and technical support please contact your nearest authorized distributor or directly with NEDERMAN.

Contact your nearest local NEDERMAN representative for advice on other technical details and application data.

6 Main components

We continuously improve our products and their efficiency through the introduction of design modifications. We reserve the right to do this without introducing these improvements on previously supplied products. We also reserve the right, without previous notice, to modify data and equipment, as well as operating and maintenance instructions.

The separator type SB consists of set of components - see Fig. 1, 2 and Table 10-1 for details.

7 Before installation

7.1 Delivery checks

Check the unit for any transport damage. In case of damage or parts missing, notify the carrier and your local NEDERMAN representative immediately.

7.2 Installation requirements

No specific foundation or structure is required.

8 Installation

8.1 Installing the bar end separator

The bar end separator is to be mounted under the outlet of the NEDERMAN conveyor simply by fixing it as shown on Fig. 2.

9 Using the bar end separator

9.1 Before start-up

WARNING: Before any kind of activity, the SAFETY REGULATIONS (Chapter 4) must be read carefully, and the safety regulations must be strictly adhered to.

9.2 Operation

The vibration strength and the inclination are to be adjusted depending on chips type. See "*Adjustment of the centrifugal weights*" further in chapter 10-1.

The operator should always be aware of the normal power consumption of the motor, normal outflow of separated material and the level of vibration. By considering the above mentioned factors and observing modifications one can be sure that the device will function properly.

10 Maintenance

Read Chapter '4 Safety' before carrying out the maintenance.

Installation, repair and maintenance work is to be carried out by qualified personnel using only original NEDERMAN spare parts. Contact your nearest authorized distributor or NEDERMAN for help or advice on technical service.

NOTE! The service intervals in this chapter are based on the unit being professionally maintained.

10.1 Maintenance instruction

NEDERMAN bar end separator is very robust in design but should like every other production machine be regularly checked and maintained.

Daily checks should be made at the start of operations until a permanent maintenance schedule can be established. When this has been done only routine checks and general observations are necessary.

Inspect screws for mounting of the vibrating screen frequently and re-tighten them if necessary. This applies particularly shortly after initial operation. The screw connections are inclined to settle during the first few hours of operation. For this reason, they should be checked for firm fitting after about one or two hours of operation. Experience has shown that the connections are permanently secure in operation after that.

Adjustment of the centrifugal weights

Remove both protective covers from the vibration motor (see pos. 2 on Fig. 2). Loosen off and withdraw the eccentric weights adjustment screw [C] - see Fig. 3. Turn the movable weight [B] to the desired position and tighten up the adjustment screw once more, having first made certain to relocate the flexible washers. It is imperative that adjustment to the weights be made in exactly the same way at either end of the vibrator i.e. to the same degree and in the same direction (see Fig. 4).

10.2 Lubrication

Vibration motors are supplied with lubricant. The manufacturer's specification is valid. For those vibrators requiring grease-lubrication, greasing should be carried out approx. every 1500 working hours.

Where no greasing programme is envisaged, total replacement of grease is recommended every 4500 working hours approximately.

We recommend the following grease:

- STABURAGS NBU 12 - for normal applications,

or similar.

NOTE! Do not mix different types of grease. Never over-grease and grease only at intervals recommend. Excess grease will cause bearings to overheat.

10.3 Spare parts

Contact your nearest authorized distributor or NEDERMAN for advice on technical service or if you require help with spare parts. See also www.nederman.com

Ordering spare parts

When ordering spare parts always state the following:

- Product serial number and NEDERMAN reference number (see the product identification plate).
- Article number and designation - see Table 10-1.
- Quantity of the parts required.

Table 10-1: Spare parts specification - see Fig. 2

Pos.	Designation
1	Screen
2	Vibration motor
3	Attachment plate
4	Hanging beam
5	Attachment indirect
6, 7, 8	Vibration damper
9	Threaded rod (for adjusting the inclination)
10	Nylon washer
11	Handle spring, upper
12	Handle spring, lower
13	Spring
14	Flexible connection
15	Hose clamp

11 Recycling

The product has been designed for component materials to be recycled. Its different material types must be handled according to relevant local regulations. Contact the distributor or NEDERMAN if uncertainties arise when scrapping the product at the end of its service life.

12 Troubleshooting

This trouble-shooting schedule only serves as a guide to probable reasons for faults. As mentioned earlier correct maintenance is the best insurance against the development of defects.

Table 12-1: Trouble shooting guide

Problem	Possible cause	Solution
Chips is not feed	To bad oscillating or to small inclination	Adjust the oscillating strength or the inclination
The vibration motor does not start	Electrical failure	Control supply wire, then the thermal protection of the motor
Chips stays on the screen	Screen is clogged with chips	Clean the screen
Bad oscillating	Vibration damper worn	Change vibration damper

13 Acronyms and abbreviations

NEDERMAN Manufacturing Poland Sp. z o. o.

ul. Okólna 45 A

05-270 Marki, Poland

Tel: +48 22 7616000

Fax: +48 22 7616099

www.nederman.com